



Healthy Cities

Lecture 4 – Planning and Regeneration,
Sustainable and Healthy

Opening Address

Suzanne Wylie

Director of Health and Environmental Services,
Belfast City Council



Belfast

- The Past
- The Present
- The Future
 - Investment and regeneration
 - Local government reform
 - Opportunities to shape place
 - Importance of integrated working





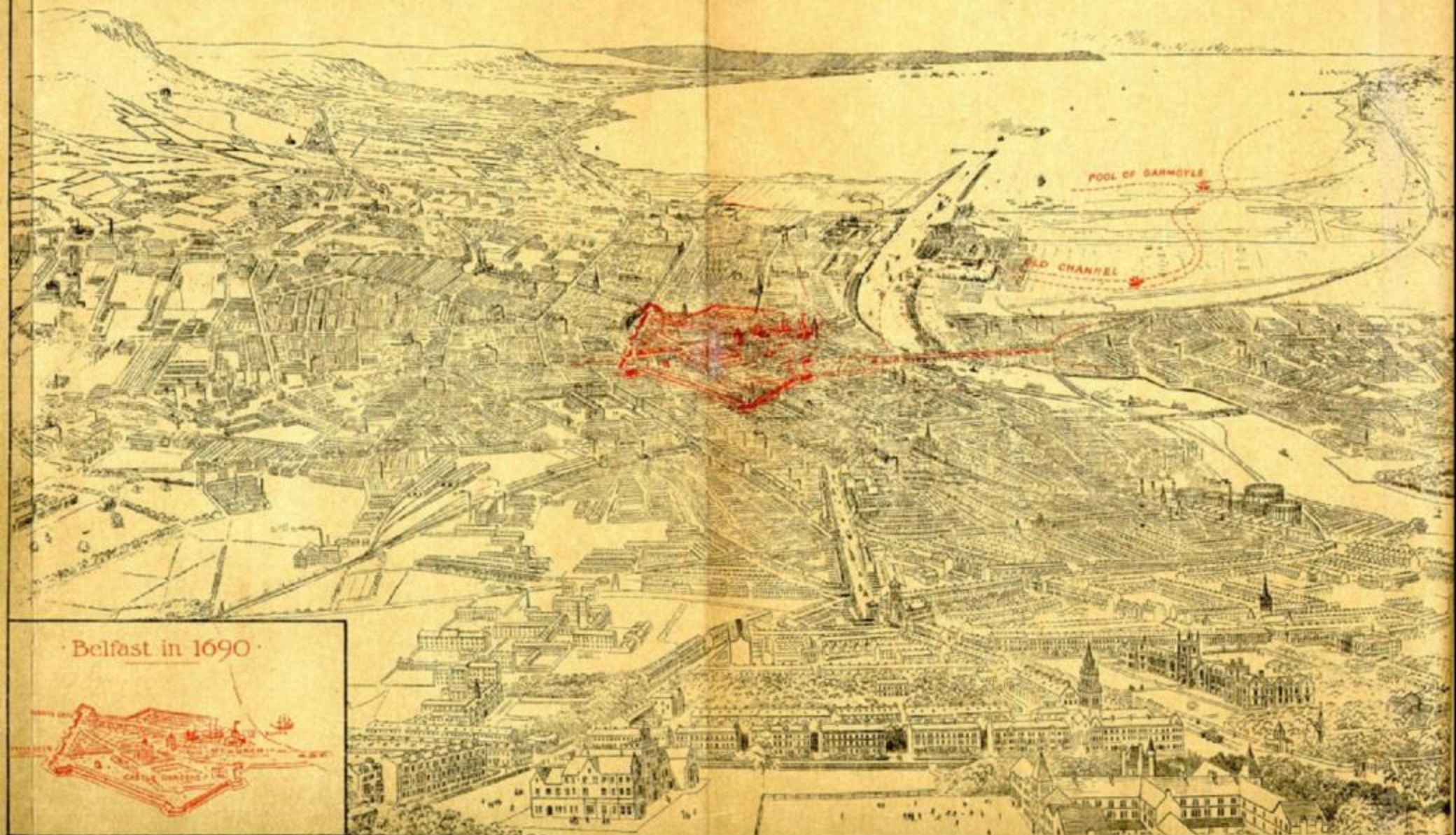
Belfast - The Past





A Bird's-Eye View of THE CITY of BELFAST · 1890 ·

also shewing the extent of The Town in 1690.
Taken from Maps of the time.



Belfast in 1690



“We Belfast people are proud of our city and its many activities. We are in the very front of the race of civic development and we have a laudable ambition to keep there
”
.....

Belfast Newsletter 1899









A.P. Hest. 28 MAY. 1963.

Poor Relations



**The great who live profusely
The rich who live plentifully
The middle sort who live well
The working trades who labour hard
but feel no want
The country people who fare
indifferently
The poor who fare hard
The miserable who really pinch and
suffer want**

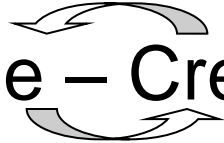
Daniel Defoe





Lessons from the past

- Global ambition – 3rd port of the Empire
- World Class Innovation
- Investment in Skills
- Civic pride – Creation of Wealth



BUT.....

- Life was simple – all power was in one place
- Wealth unevenly distributed
- No sustainability





Belfast - The Present





Belfast's importance to Northern Ireland

- Major employer of persons living in and outside the city.
- Estimated 108,000 in-commuters (up by 15% from 2001 Census year).
- One-third of all NI service sector jobs are located in Belfast
- Belfast is a 'regional economic driver' to an even greater extent than Edinburgh and Glasgow combined in Scotland or Manchester and Liverpool combined in the North West
- A magnet for service sector foreign direct investment (FDI)
- Home to two-thirds of NI's largest 50 companies and one-half of foreign-owned businesses
- A transport hub for the region
- Service exporter
- Provider of further and higher education
- Gateway for tourists
- Provider of unique retail, cultural and entertainment opportunities

Research via Oxford Economics – Belfast flow of people, skills, spending and investment – Autumn 2009





Belfast – A city in transition

- Capital City – Regional driver of NI
- Massive regeneration and £billions of investment in the past decade
- Recently declared as “*the best town in Ireland to visit*” by Lonely Planet Guide which also cited it as “*boom town*”
- Council - key role in this regeneration
- New opportunities and challenges ahead - increased financial pressures, public sector reliance



Recent developments



- Titanic Belfast
- St Anne's Square
- Streets Ahead
- Belfast Met
- Titanic Studios
- Victoria Square
- Super connected broadband
- World class events



What makes a city work?

Drivers of economic competitiveness

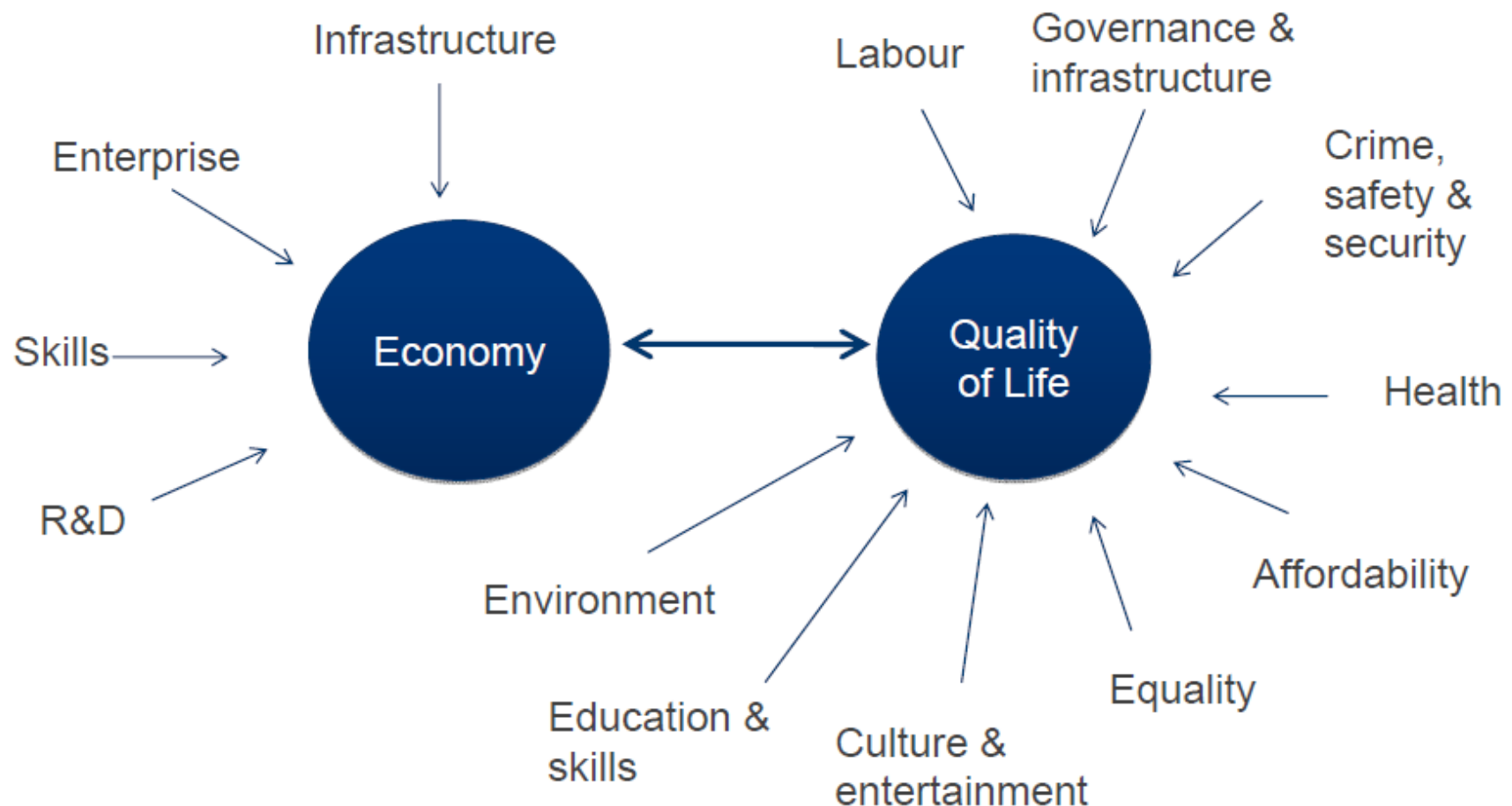
- Innovation
- Economic diversity
- Skill base
- Place quality
- Connectivity
- Leadership – strategic decision making ability

Professor Michael Parkinson

State of the Cities Report



Links between Quality of Life and economic growth

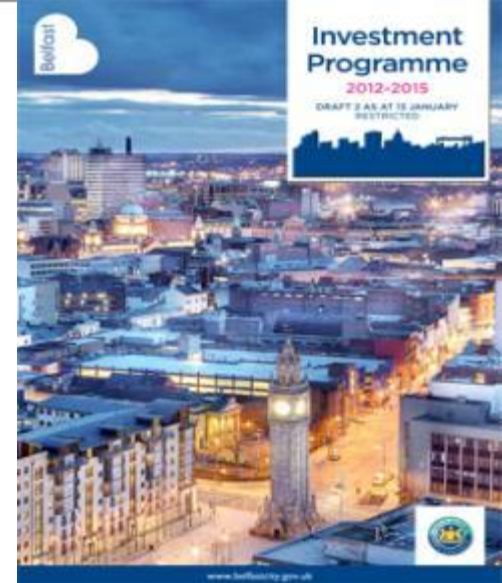


- **What is the connection** - economy drives quality of life or the other way around?
- **Answer:** both - but what role of policy, getting out of way? Laying foundations?



Belfast - The Future





Physical Investment Programme

- Investing £150 million in capital projects

Economy

- Investing £34 million in local economic growth
- Delivering 200 job opportunities and 400 work placement, apprenticeship and internship opportunities
- Increasing procurement to 60%
- Investing nearly £8 million in events

People, communities and neighbourhoods

- Investing £29 million in local communities

Value for money

- Keeping rates below inflation
- Delivering £20 million in savings by 2015





Supporting principles

Five principles underpin our Investment Programme

- Good relations and equality
- Balanced investment across the city
- Partnership and integration
- Value for money
- Sustainability





“There are more grounds for optimism here than in most other capital cities in the world today. Make sure you don’t forget that. Set yourself some stretch goals that really extend expectations about what you can achieve so that everyone reaches for those goals together.”

Declan Kelly
Former US Economic Envoy to Northern Ireland



Role of local government

- **Leadership** - helping create local ambition and confidence
- **Service provider** - local service provider and integrator
- **Co-producer** – delivering joint solutions to local issues
- **Place-shaper** - improving quality of life for everyone
- **Investor**– investing in communities & helping stimulate economy

By 2015..

- **Planning Authority**
- **Regeneration Authority**



Local Government Reform

An opportunity...

- Reduction from 26 to 11 larger councils by 2015
- Transfer of key place-shaping functions e.g.
 - Planning
 - Regeneration
 - Enhanced local economic development
 - Community Planning
- Councils becoming a central partner of government
- Grasp the opportunity and be open to change



Enhanced Ability to Shape Place





Developing Approaches



Draft
Community
Development
Strategy
For public consultation



Belfast City Council
Good Relations Strategy



Building our Future Together



Investment
Programme
2012-2015



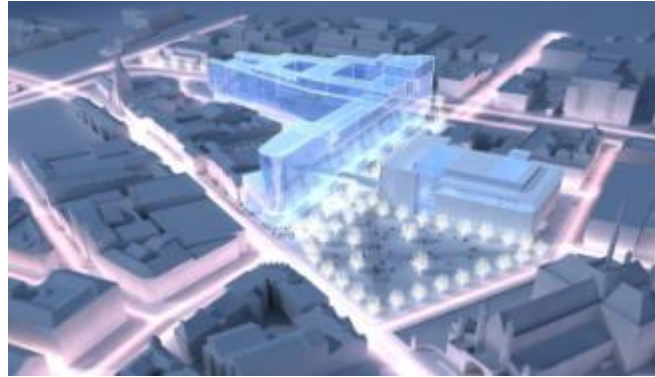
European Union
European Regional
Development Fund
Investing in your future



Opportunities for future development



Royal Exchange



University of Ulster campus



Conference / Exhibition centre



Stadia





Belfast Strategic Partnership

supported by
Belfast Health Development Unit

- Belfast Strategic Partnership (BSP) is a key strategic forum for addressing the significant life inequalities that exist in the city
- High level representation from statutory, voluntary and community sectors
- Identified priorities for action including regenerating living spaces and healthy places
- The work on Healthy Urban Environment is guided and supervised by the Regeneration and Healthy Urban Environment group.





Regenerating living spaces and healthy places

- BSP is working proactively with colleagues in Belfast Healthy Cities and others to ensure that positive health outcomes are included in regeneration programmes
- Opportunities already identified include:
 - *Rolling out successful models of integrated planning at a local level*
 - *Integration of health into neighbourhood strategies (including neighbourhood renewal / community planning)*
 - *Achieving both a child friendly and age friendly city*
 - *An Active Travel approach for Belfast*



Some examples of work underway



Community gardens



Kids space

Outdoor gyms



Age Friendly Belfast



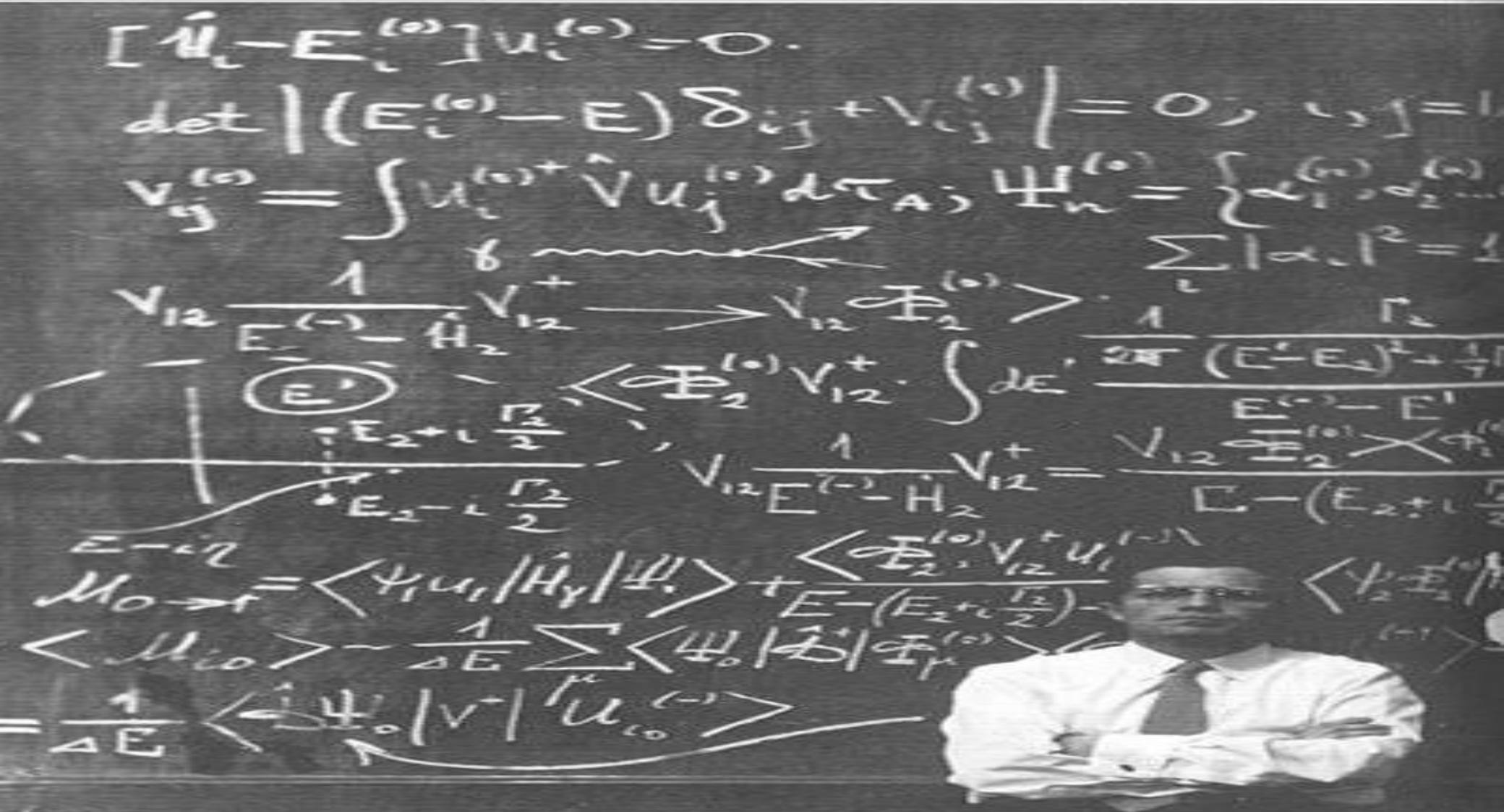
How regeneration and planning contribute to a learning, healthy and sustainable city

- Spatial and land use planning sets the contours of urban spaces and uses, and is therefore one of the most crucial and far reaching functions in society.
- Not only does this affect the economy, but policies and decisions on the built environment also shape health, as they influence people's ability to access jobs, services and leisure opportunities, be physically active, and build social networks.
- The quality of the built environment is vital for reducing inequalities in health, which cause both individual suffering and societal loss, through unused human potential.



It's not hard.....
It's not rocket science...

This is rocket science....



The chalkboard contains the following mathematical content:

- Equation 1: $[\hat{H}_i - E_i^{(0)}]u_i^{(0)} = 0.$
- Equation 2: $\det |(E_i^{(0)} - E)\delta_{ij} + V_{ij}^{(0)}| = 0; i, j = 1, 2, \dots$
- Equation 3: $V_{ij}^{(0)} = \int u_i^{(0)*} \hat{V} u_j^{(0)} d\tau_A; \Psi_n^{(0)} = \{ \alpha_1^{(n)}, \alpha_2^{(n)}, \dots \}$
- Equation 4: $\sum_l |\alpha_l| = 1$
- Equation 5: $V_{12} \frac{1}{E_1^{(-)} - \hat{H}_2} V_{12}^+ \rightarrow V_{12} \Phi_2^{(0)}$
- Equation 6: $\int dE' \frac{1}{2\pi} \frac{\Gamma_2}{(E' - E_2)^2 + \frac{\Gamma_2^2}{4}}$
- Equation 7: $\frac{1}{V_{12} E^{(-)} - \hat{H}_2} V_{12}^+ = \frac{V_{12} \Phi_2^{(0)} \times \Phi_2^{(0)*}}{E - (E_2 + i\frac{\Gamma_2}{2})}$
- Equation 8: $\langle \Phi_2^{(0)} | V_{12}^+ | \Psi_1^{(0)} \rangle$
- Equation 9: $\langle \Psi_1^{(0)} | \hat{H}_Y | \Psi_1^{(0)} \rangle + \frac{\langle \Phi_2^{(0)} | V_{12}^+ | \Psi_1^{(0)} \rangle \langle \Psi_1^{(0)} | \Phi_2^{(0)*} \rangle}{E - (E_2 + i\frac{\Gamma_2}{2})}$
- Equation 10: $\langle \Psi_0 \rangle = \frac{1}{\Delta E} \sum_{\mu} \langle \Psi_0 | \hat{V} | \Phi_{\mu}^{(0)} \rangle \langle \Phi_{\mu}^{(0)} | \Psi_0 \rangle$
- Equation 11: $= \frac{1}{\Delta E} \langle \Psi_0 | \hat{V} | \Psi_0^{(-)} \rangle$

A diagram on the left shows a potential energy curve with a well. The energy levels $E_2 + i\frac{\Gamma_2}{2}$ and $E_2 - i\frac{\Gamma_2}{2}$ are marked on the imaginary axis. A pole is shown at E' on the real axis. A dashed line connects E' to the real axis.

A man in a white shirt and tie is sitting in front of the chalkboard, looking towards the camera.



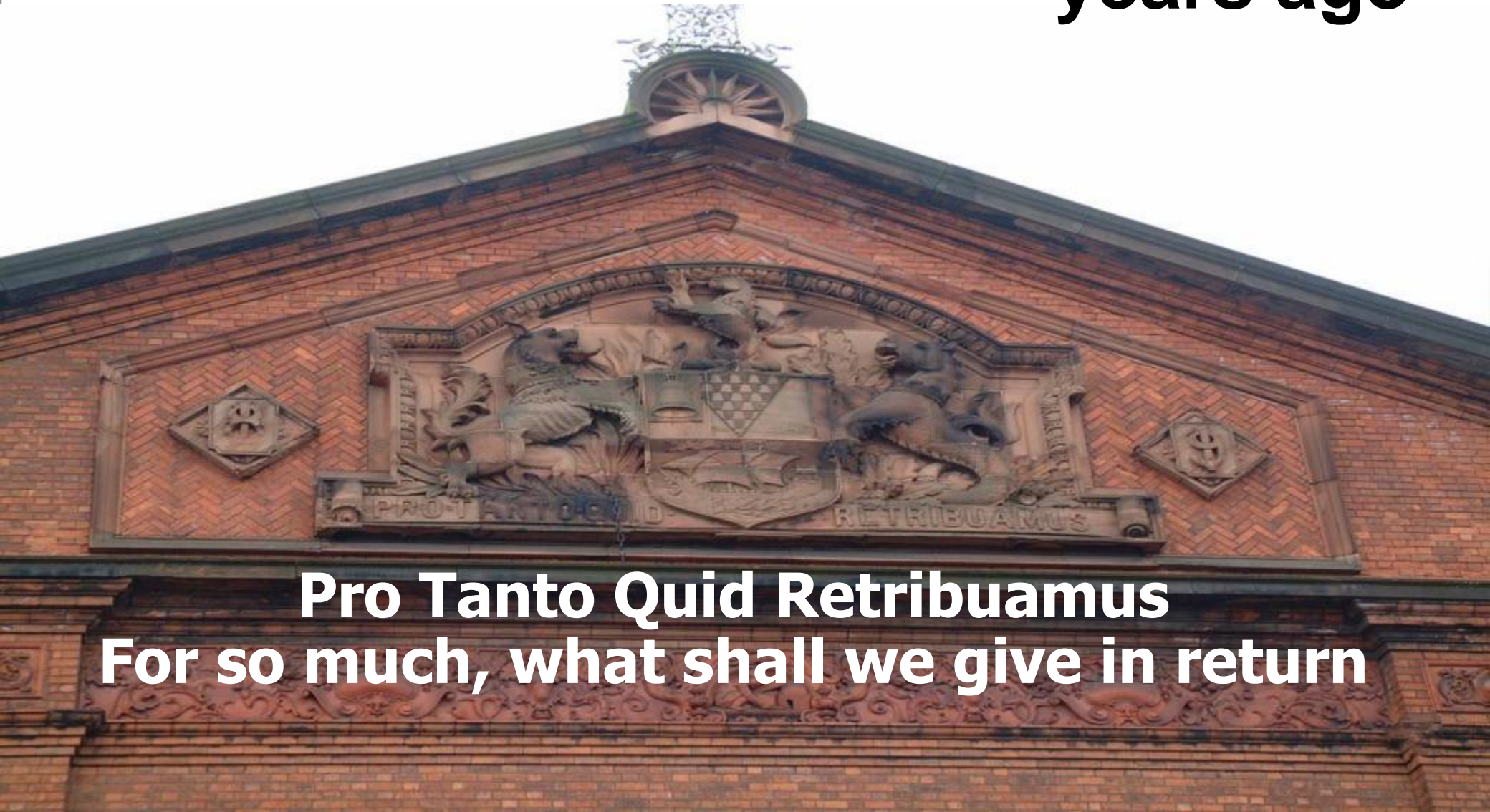
What it is about..

- Common understanding
- Shared analysis
- Shared responsibility and contribution
- Ambition and resilience

As our motto tells us....



Our City Leaders were right 100 years ago



Pro Tanto Quid Retribuamus
For so much, what shall we give in return