

WESTWAY

DEVELOPMENT TRUST

**Making a purse from a sow's ear
42 years of imaginative urbanism 1971-2013**

Chris Bailey

Belfast Healthy Cities, Lecture 4 Jan 15th 2013

**Planning and Regeneration,
Sustainable and Healthy**



Westway Development Trust's 23 acres of land (outlined in red)



Now has assets of £29million and annual income of £7 million

Established 1971







London's new M-way opens —with a row



ANCIENT RESIDENTS HOPE of their streets with passing vehicles, who live in the shadow of the CELESTIAL Western Avenue extension. Estimated five million people today.

Some of the protesters are the residents of the "Crown Court" area, which is the site of the new road. The residents of the "Crown Court" area are the only ones who have been consulted about the road. The residents of the "Crown Court" area are the only ones who have been consulted about the road.

Standard Reporters

about again on the site. The road is to be built in two stages. The first stage is the construction of the road from the site of the old road to the site of the new road. The second stage is the construction of the road from the site of the old road to the site of the new road.

Protest noted

But when the road is built, the residents of the "Crown Court" area will be able to see the road. The residents of the "Crown Court" area will be able to see the road.

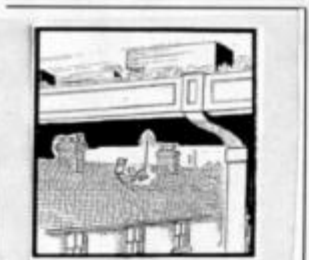


London's controversial £30m. elevated motorway to see for the first time today.

A WOMAN'S PROTEST



HOWEVER Joan Lewis (above) thought she was called for by when the U.K. to help her in North Kensington. She has been protesting against the new road.



A view of the times - from North Kensington's very own 'CORRUGATED TIMES'

The big problems of the protesters

By ROBERT STEPHENS

THEir big problem is that they are protesting against the new road. They are protesting against the new road.

Problems differ

But different areas along the motorway face different problems. The residents of the "Crown Court" area are the only ones who have been consulted about the road.

The Greater London Council has agreed to finance a three-year study of the road. The study will be completed by the end of 1970. The study will be completed by the end of 1970.



FIGURAL PHOTOGRAPHER, followed by Mr. George Clark, chairman of the North Kensington Residents' Association, protesting against the road.

Head for the open road tomorrow night

Go late night shopping down the Kingsway
Open until 8 p.m. every day



I DON'T BELIEVE IN NOTHING
I FEEL LIKE THEY OUGHT TO BURN DOWN THE WORLD
JUST LET IT BURN DOWN, BABY.





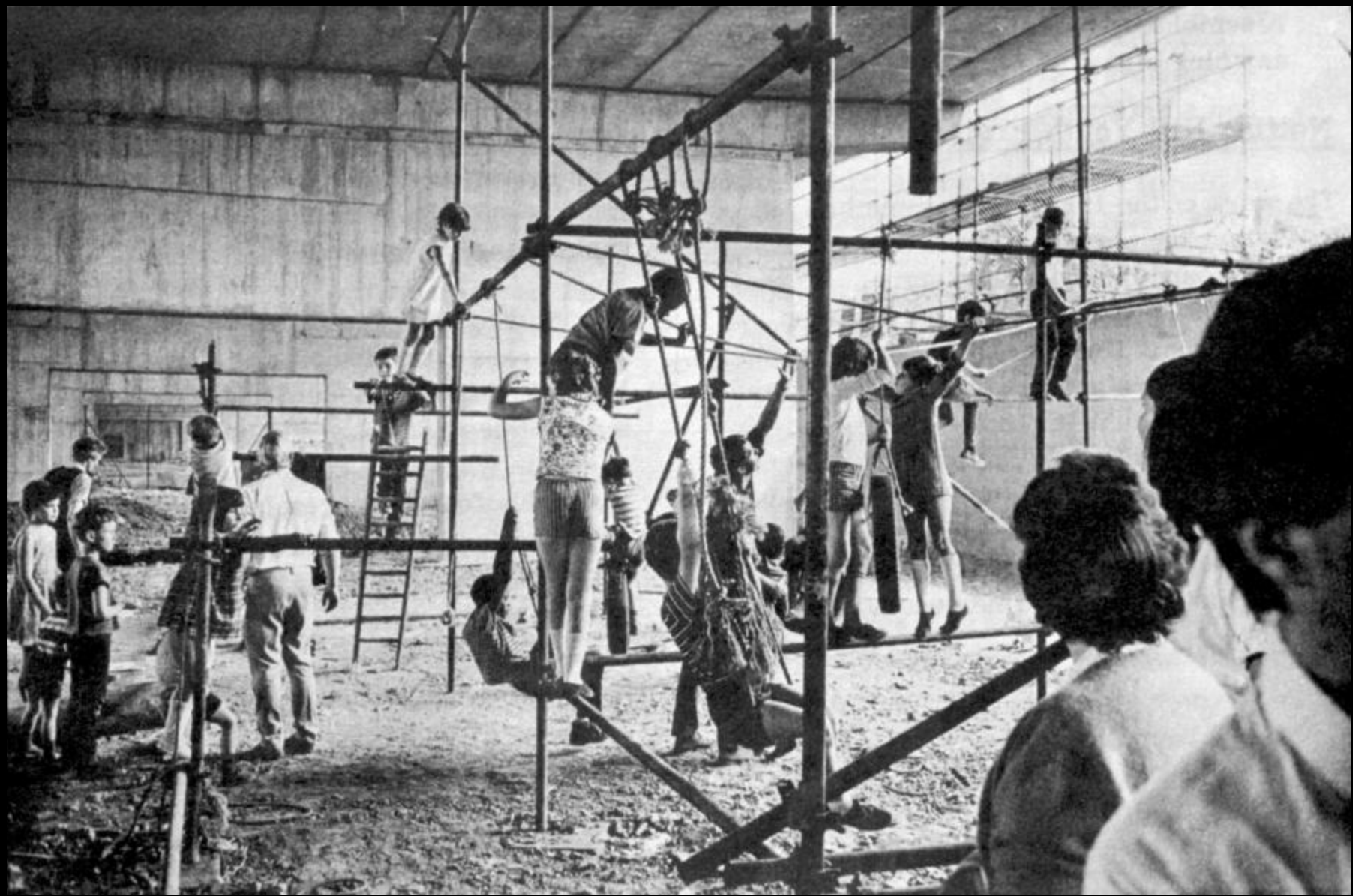


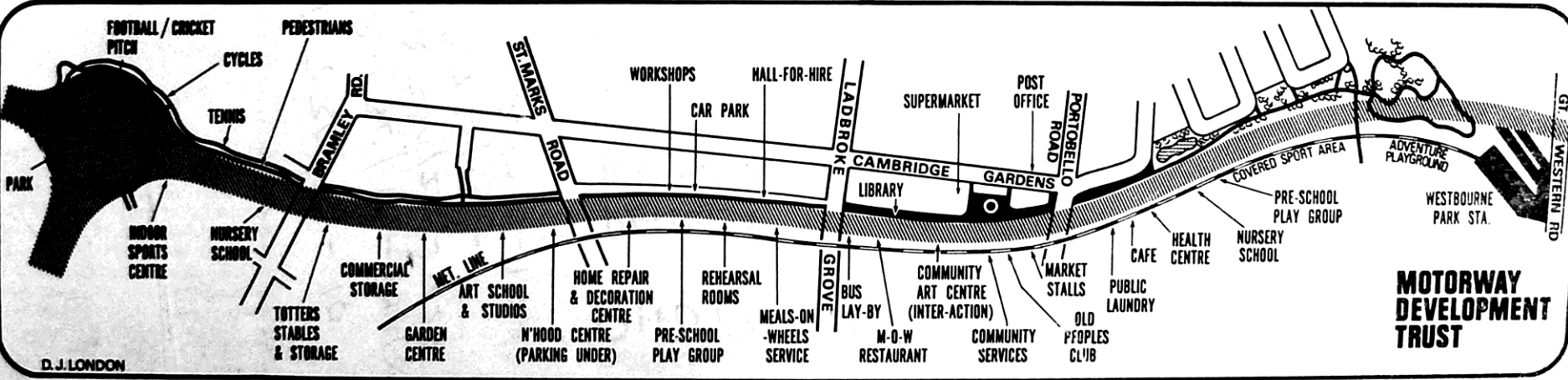
SUMMER PROJECT

housing problems
playspace provision
neighbourhood centres
community action

information from
60 St Ervan's Rd W10
tel : 969 6536







MOTORWAY DEVELOPMENT TRUST

D.J. LONDON





















we underpin the core costs of much of our work through managing a varied commercial property portfolio.

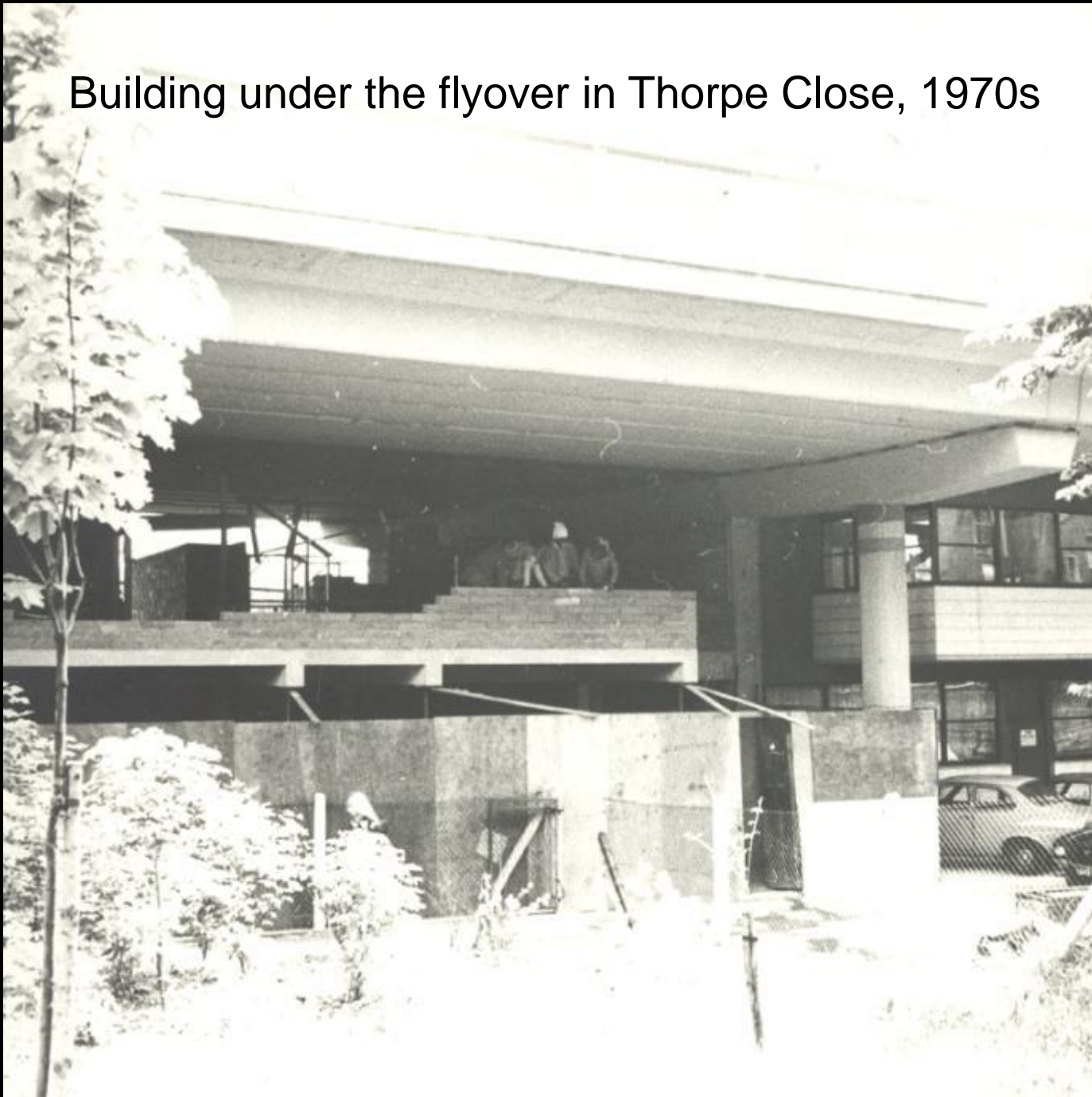


We rent to small businesses, we run markets, we let restaurant space and we have an arcade of boutiques.

PORTOBELLO GREEN

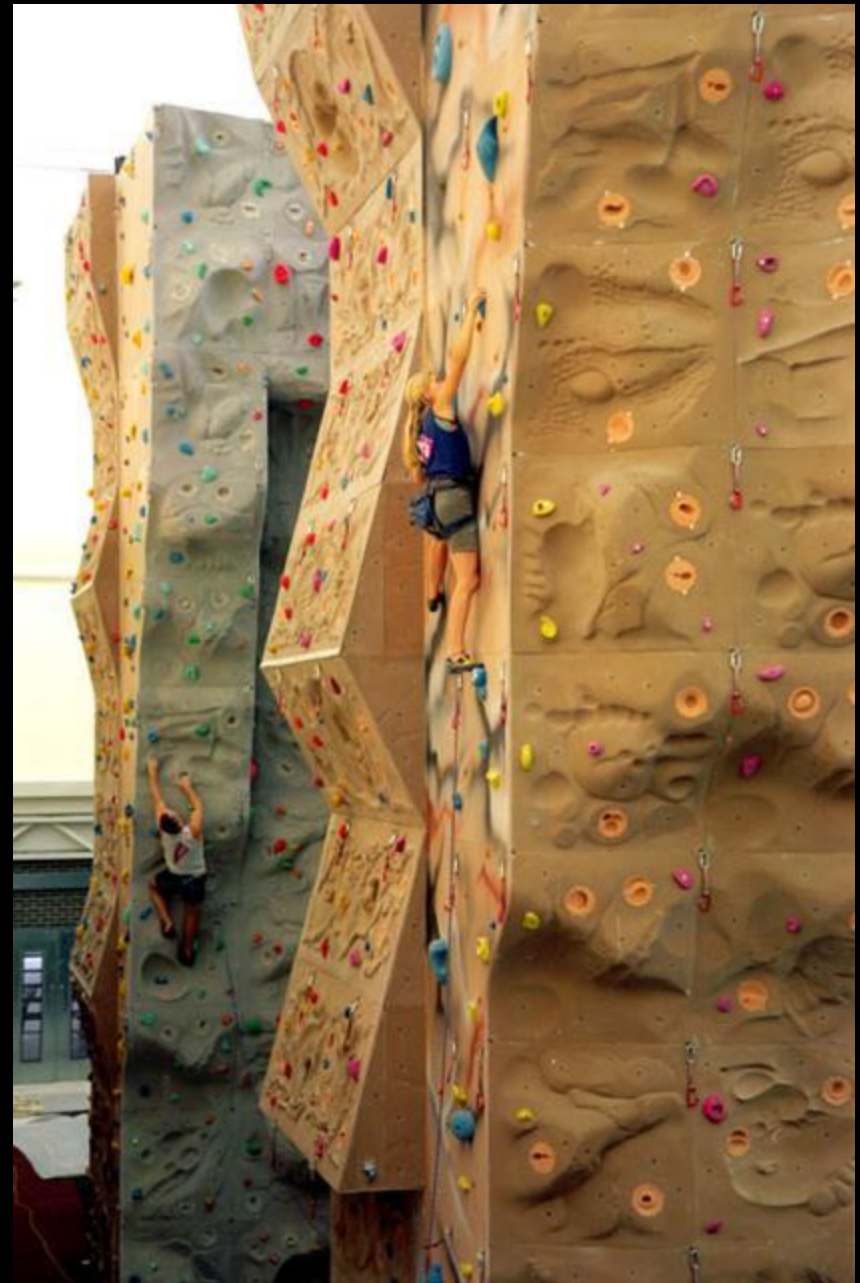
The image shows the entrance to a jewelry store named "Portobello Green". The store's name is displayed in large, white, three-dimensional letters on a dark grey horizontal sign above the entrance. The entrance itself is a wide, open doorway with a light-colored frame. To the left of the main entrance is a display window with a white frame, containing various pieces of jewelry, including a necklace and a watch. To the right is another display window, also with a white frame, showcasing more jewelry, including a necklace and a watch. The interior of the store is visible through the doorway, showing a well-lit space with several recessed ceiling lights and a polished floor. The overall scene is captured at night, with the store's lights providing the primary illumination.

Building under the flyover in Thorpe Close, 1970s
















...community members get top class facilities at low prices...





I had a heart bypass operation, that's why I joined the club, my specialist said I needed regular exercise. It was the first gym I'd ever joined.

A photograph of a classroom setting. A male teacher in a white long-sleeved shirt is standing and handing a stack of papers to a student seated at a table. The student is wearing a dark jacket and is looking at the papers. Other students are visible in the background, some looking at their own papers. The room has computer monitors, a printer, and a bulletin board on the wall. A pink speech bubble is overlaid on the right side of the image.

During the last year 143 adult learners attended our courses.

A photograph of two women in an office setting. One woman, wearing a yellow patterned headscarf and a black top, is standing and pointing at a document held by another woman. The second woman is sitting at a desk with a computer monitor displaying a green map. The office has windows with blinds in the background. A purple text box is overlaid on the right side of the image.

We aim to create a range of fresh opportunities for people of all ages and across communities, ensuring they are affordable to those on low incomes







Ebony Bones at Portobello WinterFest08

















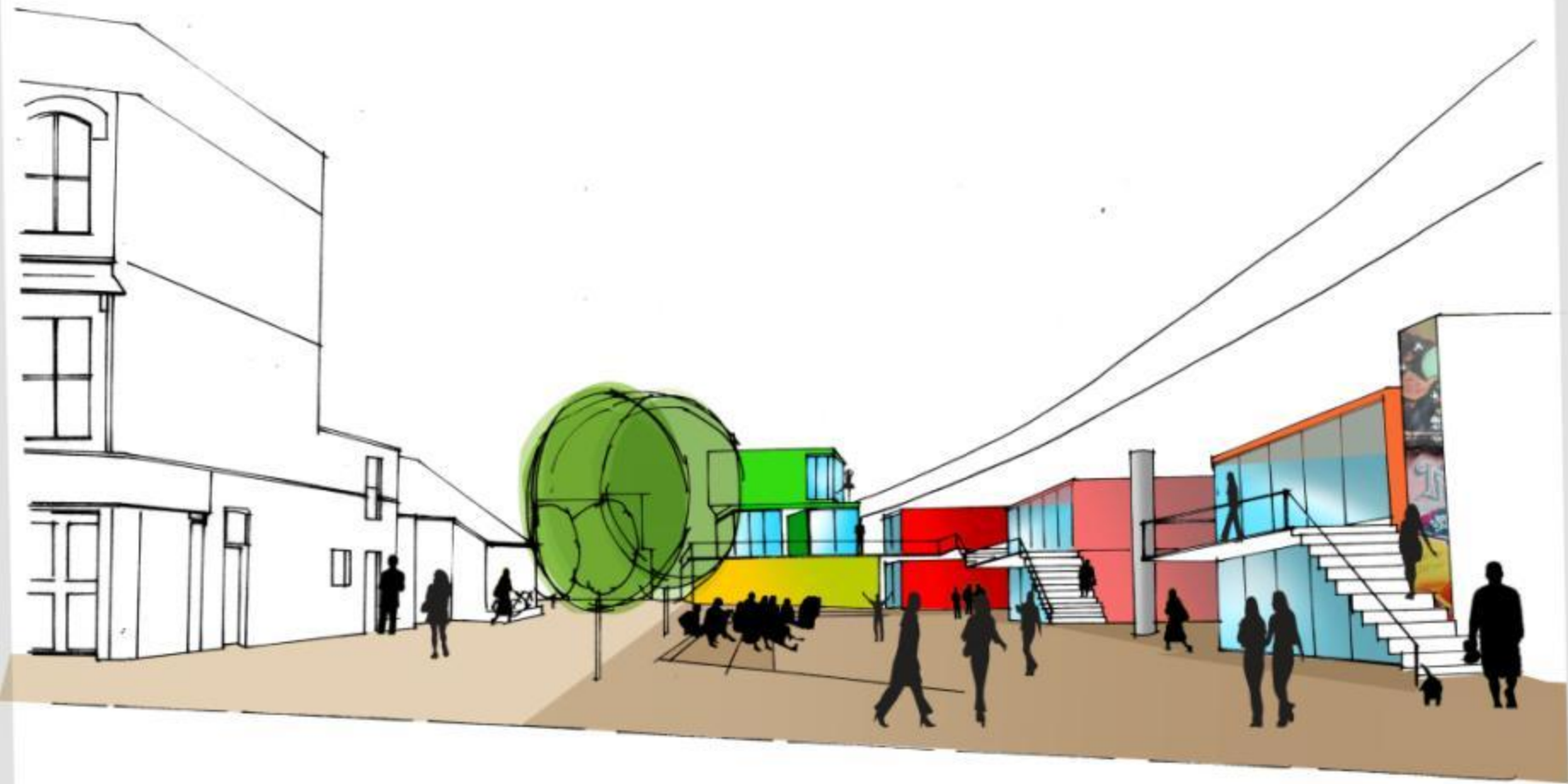


CAFE NOVA

FLYOVER







Being community-based doesn't mean being low-key or small scale

Opportunities come in all shapes and sizes

Strong principles, clear aims and simple concepts are key but so is seizing the moment

If you know your strategic direction then implementation plans can change and adapt to circumstance

Because it's a long-term business and the future is unknown



























Westway Development Trust
Enhancing Local Lives . . .
and building for the future

Enterprise & Opportunity
Health & Wellbeing
Sports & Fitness
Education & Arts

