

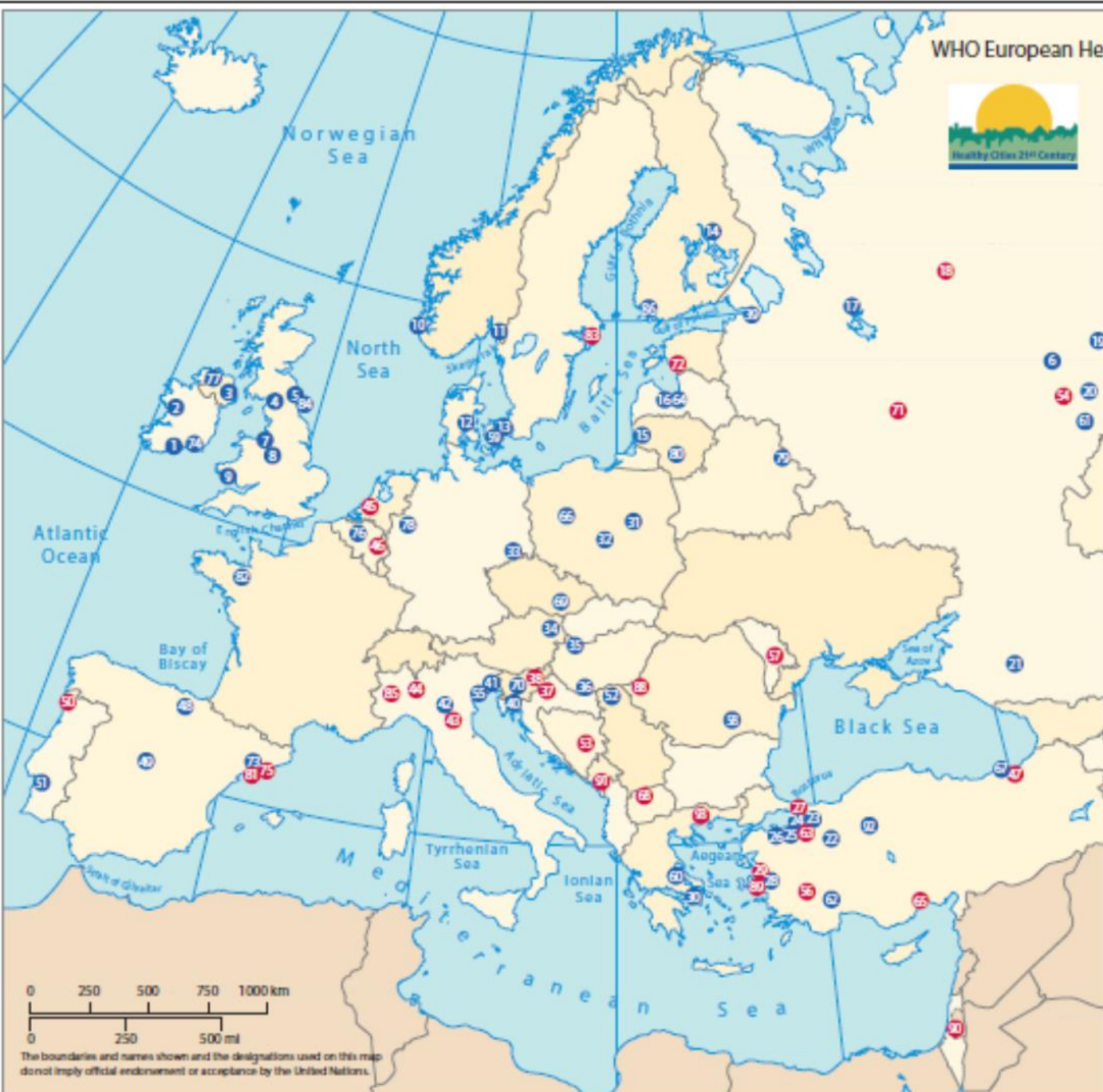


Creating healthy cities: the role of planning

Jonna Monaghan
Belfast Healthy Cities

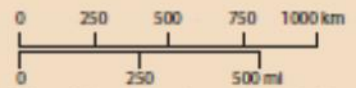


WHO European Healthy Cities Network – Phase VI (2014–2018)



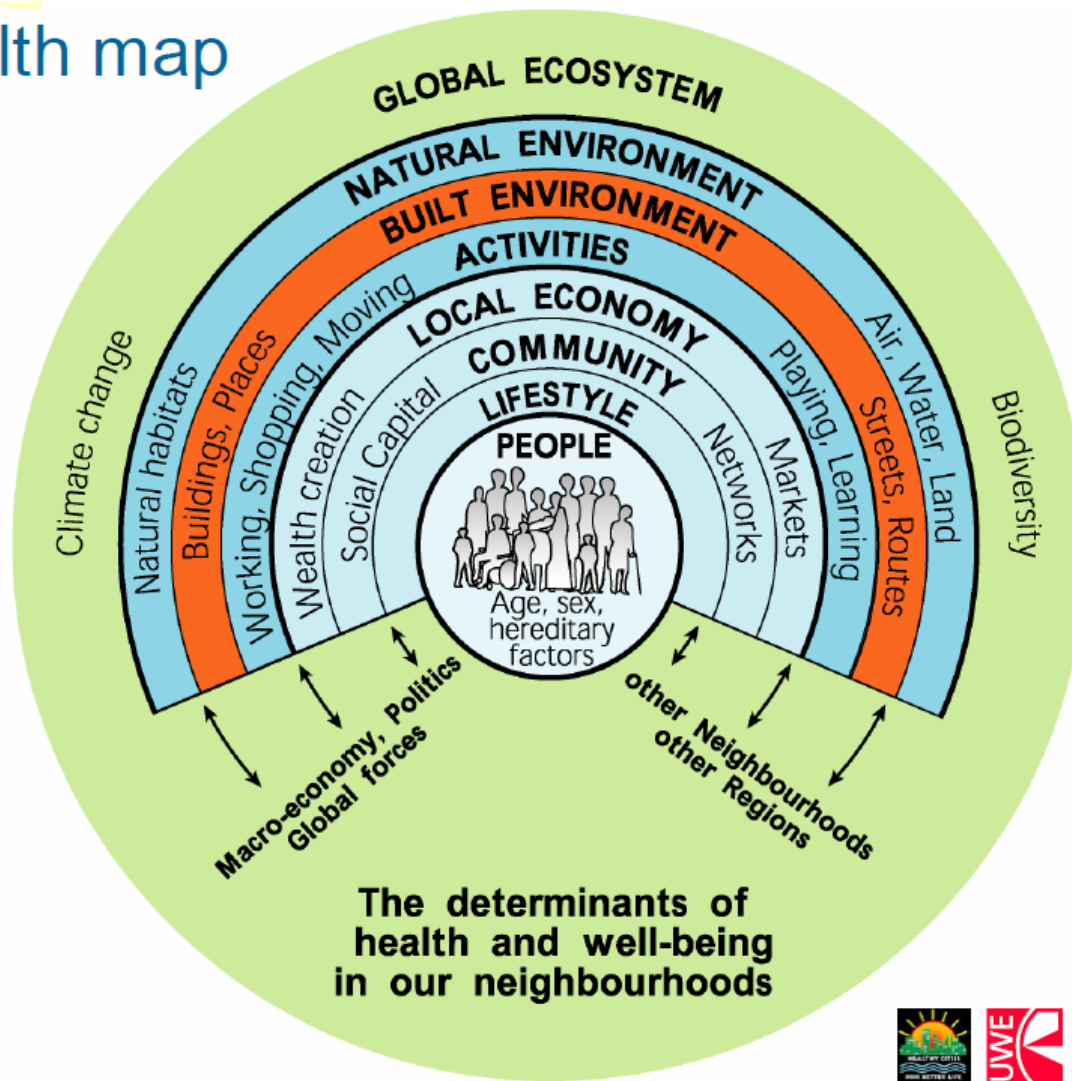
1	Cork	IRE	50	Viana do Castelo	POR
2	Galway	IRE	51	Sizal	POR
3	Belfast	UNK	52	Novi Sad	SRB
4	Cardiff	UNK	53	Sarajevo	BHR
5	Newcastle	UNK	54	Ulyanovsk	RUS
6	Chobokvay	RUS	55	Venice	ITA
7	Liverpool	UNK	56	Denizli	TUR
8	Stoke-on-Trent	UNK	57	Chianau	MDA
9	Swansea	UNK	58	Bucharest	ROM
10	Sandnes	NOR	59	Frederiksborg	DEN
11	Orkney County	NOR	60	Filiovo-Pychiko	GRE
12	Horsens	DEN	61	Chapayevsk	RUS
13	Copenhagen	DEN	62	Burdur City	TUR
14	Kaapio	FIN	63	Ormanegan	TUR
15	Kaipeda	LTH	64	Riga	LVA
16	Jurmala	LVA	65	Micrit Municipality	TUR
17	Cheremovsk	RUS	66	Poznan	POL
18	Valy Ustyug	RUS	67	Trabzon Metropolitan	TUR
19	Ichevsk	RUS	68	Slozje	MKD
20	Devinsograd	RUS	69	Biro	CZE
21	Stavropol City	RUS	70	Ljubljana	SVN
22	Eskişehir	TUR	71	Stapino	RUS
23	Gelcik	TUR	72	Pirna	EST
24	Yalova	TUR	73	Sant Andreu de la Barca	SPA
25	Bursa	TUR	74	Waterford	IRE
26	Nikifer	TUR	75	Barcelona	SPA
27	Kadiköy	TUR	76	Brussels	BEL
28	Lemir	TUR	77	Derry City and Strabane	UNK
29	Karpykaferrir	TUR	78	Düsseldorf	DEU
30	Amassonian	GRE	79	Gorki	BLR
31	Warsaw	POL	80	Karacas	LTH
32	Lodz	POL	81	L'Hospitalet de Llobregat	SPA
33	Dresden	DEU	82	Rennes	FRA
34	Vienna	AUS	83	Stockholm	SWE
35	Cytr	HUN	84	Sunderland	UNK
36	Pecs	HUN	85	Turin	ITA
37	Zagreb	CRO	86	Turku	FIN
38	Celje	SVN	87	Novosibirsk	RUS
39	St Petersburg	RUS	88	Municipality of Arod	ROM
40	Hijka	CRO	89	Belgovoferir	TUR
41	Udine	ITA	90	Jerusalem	ISR
42	Modena	ITA	91	Podgorica	MON
43	Bologna	ITA	92	Çankaya	TUR
44	Milan	ITA	93	Drama	GRE
45	Rotterdam	NET			
46	Liège	BEL			
47	Ortahisar (Trabzon)	TUR			
48	Vitoria-Gasteiz	SPA			
49	Villanueva de la Cañada	SPA			

● 64 Designated cities
● 29 Applicant cities



The boundaries and names shown and the designations used on this map do not imply official endorsement or acceptance by the United Nations.

The settlement health map



Faculty of the Built Environment



“Traffic will be to 21st century public health what sewage was to 19th century public health”

Scrofula
Cholera

Diphtheria

Typhoid

Dysentery

1858

Stress & mental health

Asthma

2016

Obesity

Heart disease



Belfast living conditions – around 1900



Fig. 5.
Rear view of houses in Smithfield. A requirement of housing bye-law was for each house to have a yard at least ten feet square with a separate privy (dry closet). A privy roof can be seen in each yard, also the common entry at the back used for emptying refuse from the houses and conveying the contents of the earth privies and ashpits to the outside street.



Fig. 6.
Mitchell's Court (off Brown Square), terrace of four cramped run-down houses facing to a narrow entry, photographed in March 1912. Women in the doorway look down at eight small children, all reasonably clad.



Assessing walkability for older people



Opportunities
to socialise
Need to feel
safe



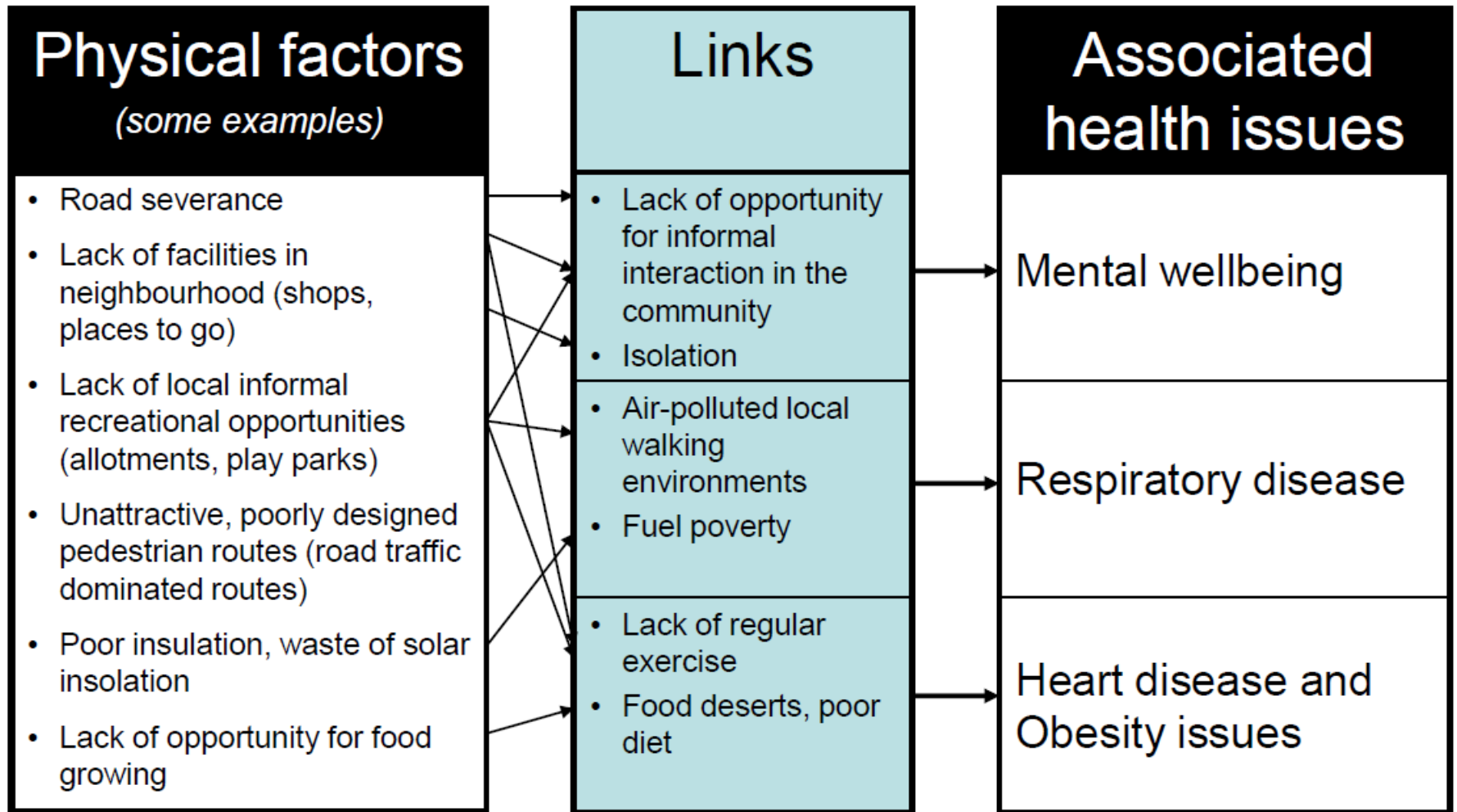
Children's priorities



- ✓ Green space
- ✓ Places to socialise
- ✓ Safe and clean neighbourhoods
- ✓ Connected neighbourhoods
- ✓ Controlled traffic



How does Urban Planning affect health?



People focused?





A Finger of the Transit City Fabric

A small neighbourhood of 2500 inh was renovated and a **supplementary bus oriented area of 1300 inh was built.**

A bus street combines the areas.



Some local services

8.6.2013 UF Leo Kosonen



Physical activity?





”Copenhagenization”

”Copenhagen lane”

**Traffic calming
experiment
at the high street
Nørrebrogade in
Copenhagen inspired
NY to traffic calm
Broadway at Times
Square**





Play space?



Thank you

Further information

Jonna Monaghan

jonna@belfasthealthycities.com

(028) 9032 8811

www.belfasthealthycities.com

@belfasthealthy

