

The nature of public space along the lower Falls

MMAS

The Street

*'More than a mere traffic channel, the street is a **complex civic institution.**'*

The public good requires that the street space be kept open, accessible to all, and equipped for its functions...'

Spiro Kostof

Definition of Public Space

A public space is a social space that is **open and accessible to all**, regardless of gender, race, ethnicity, age or socio-economic level.

The influence of quality public space on mental and physical health

One of the most significant factors effecting our health and well-being is
the environment we exist in

A growing evidence base supports the role of good public space in
delivering positive public health outcomes

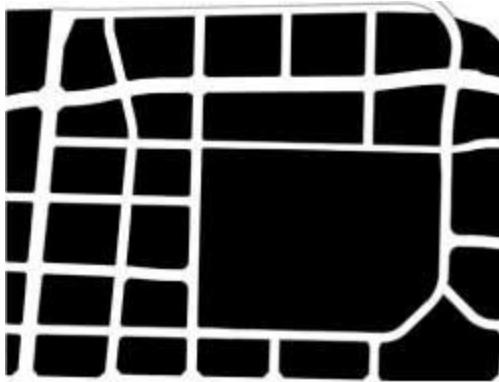
It follows that poor quality urban space will have negative effects on
public physical and mental health











MISSISSAUGA



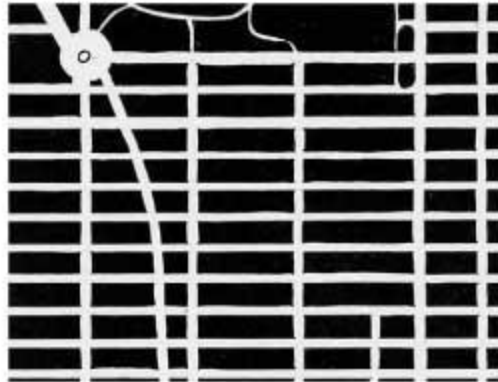
BARCELONA



COPENHAGEN



LONDON



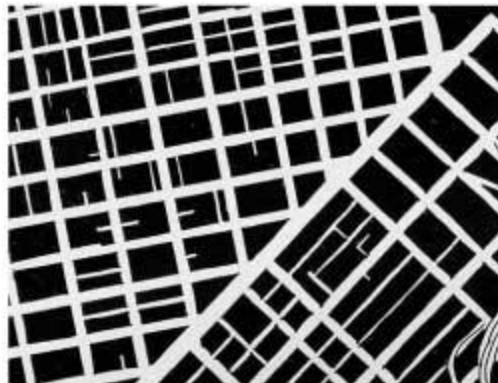
NEW YORK



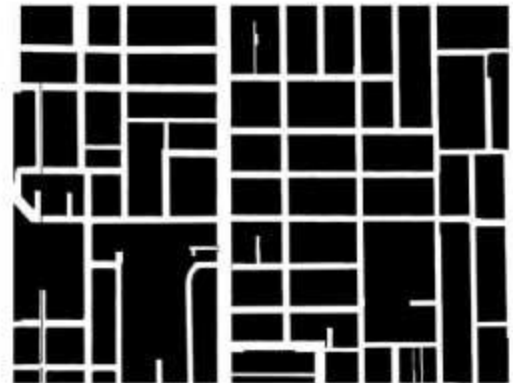
PARIS



ROME



SAN FRANCISCO



TORONTO

An abundance of open space due to the fragmentation of the
urban fabric –

But what is the nature of it?

Current condition of 'public open space' in the area













Conway Mill













St. P. Cath

TWIN SPINS

THE ULTIMATE...
...WANT TO WIN

CRICK
STADIUM

THE GREAT
RILE
CRICK
STADIUM





Harnessing potential of existing open space













BARCELONA





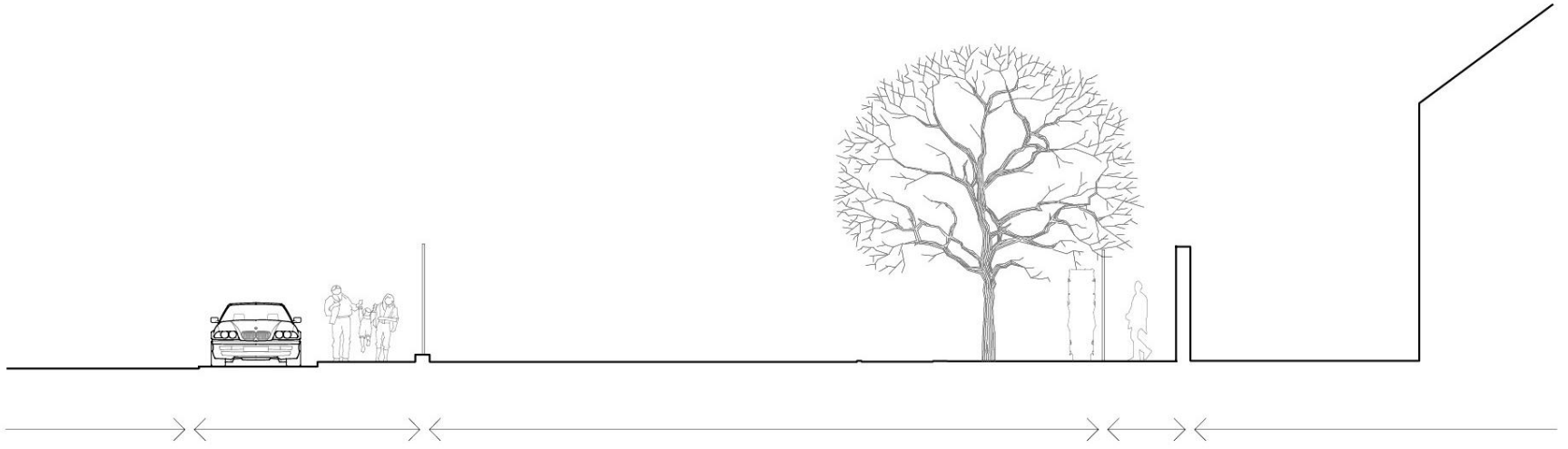
TAXI INTERROOM

NN SHAW
Speed Clothing
Alterations
075 4327 9612

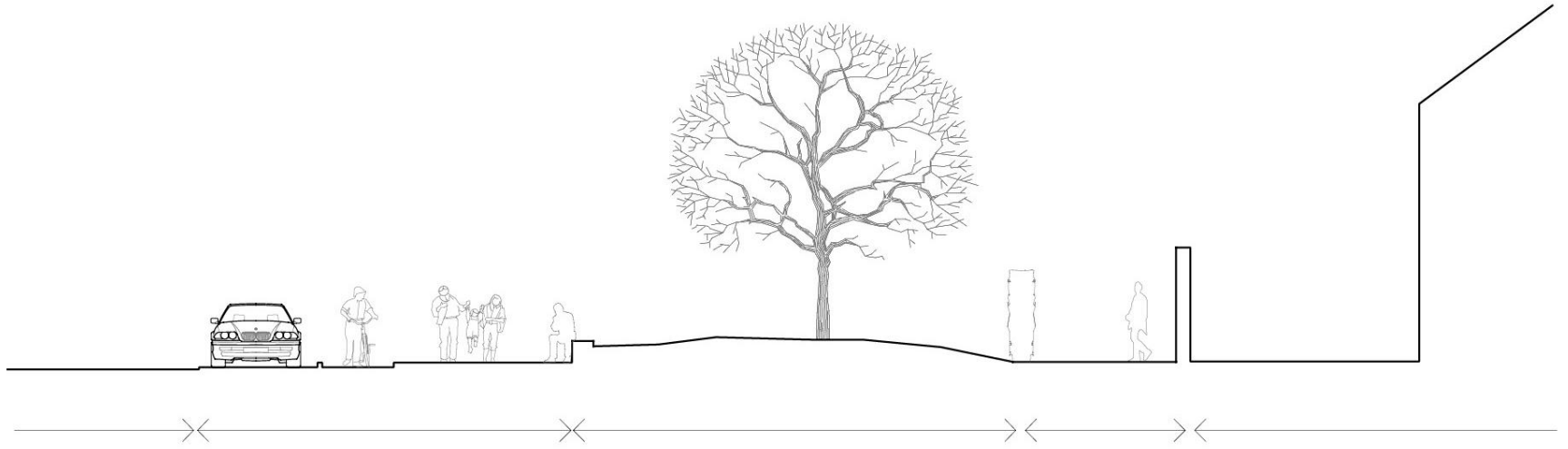
Tea & Coffee
Jam
Shakes

We want the Freedom of our Country and y...





Existing Streetscape

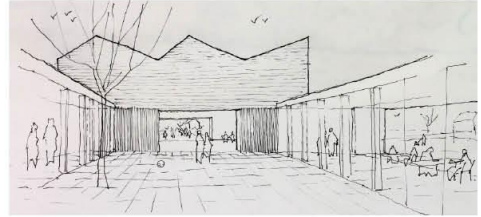
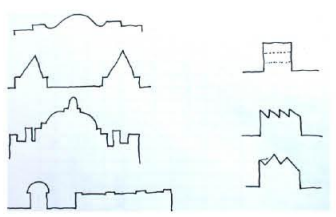
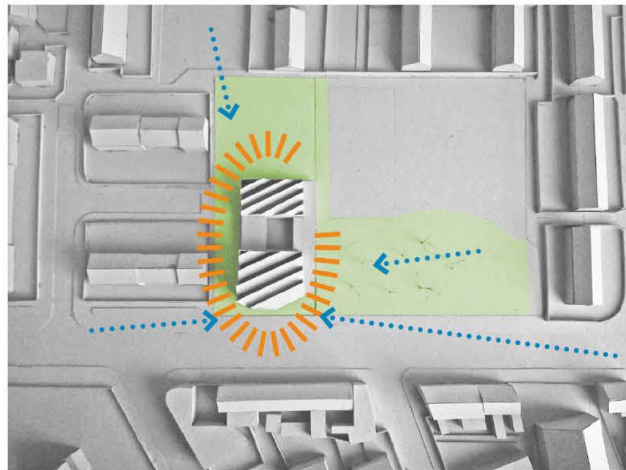
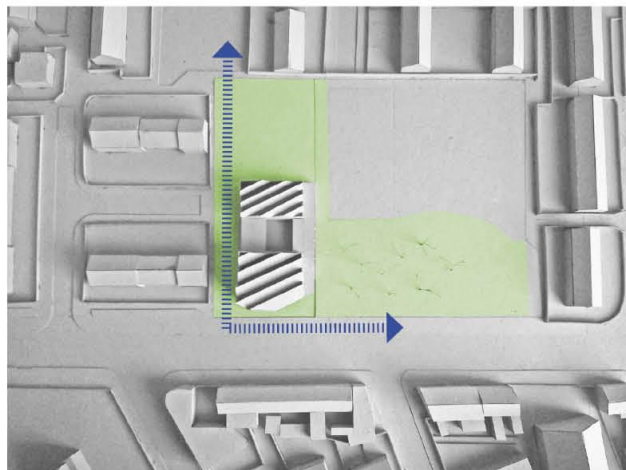
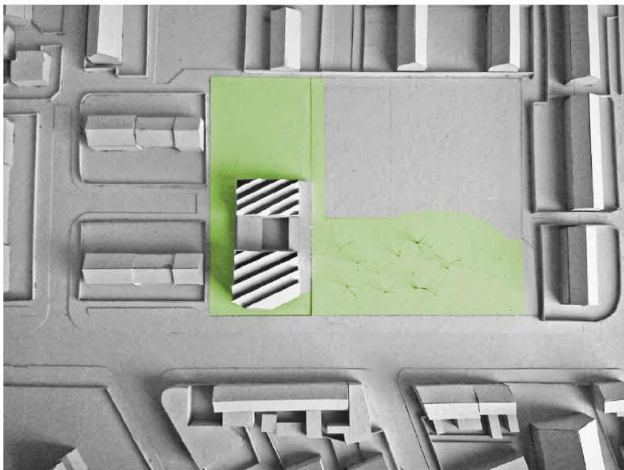


Potential Streetscape

Examples of current projects





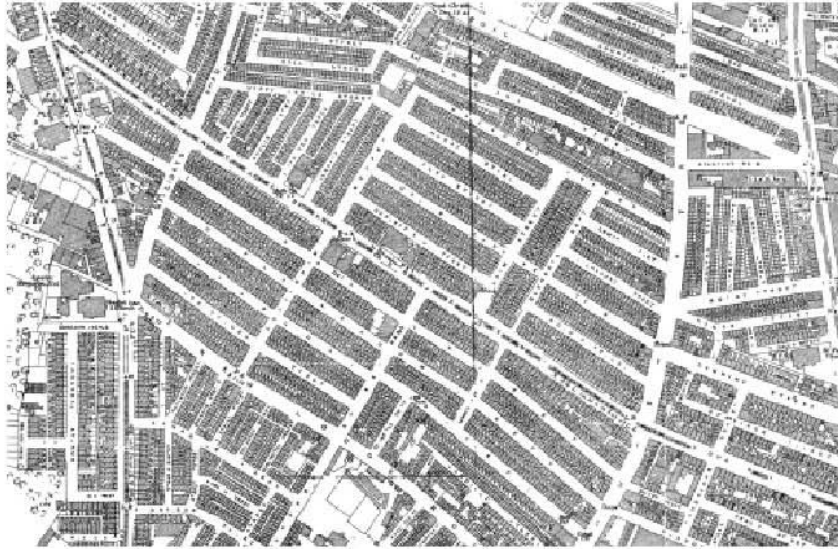












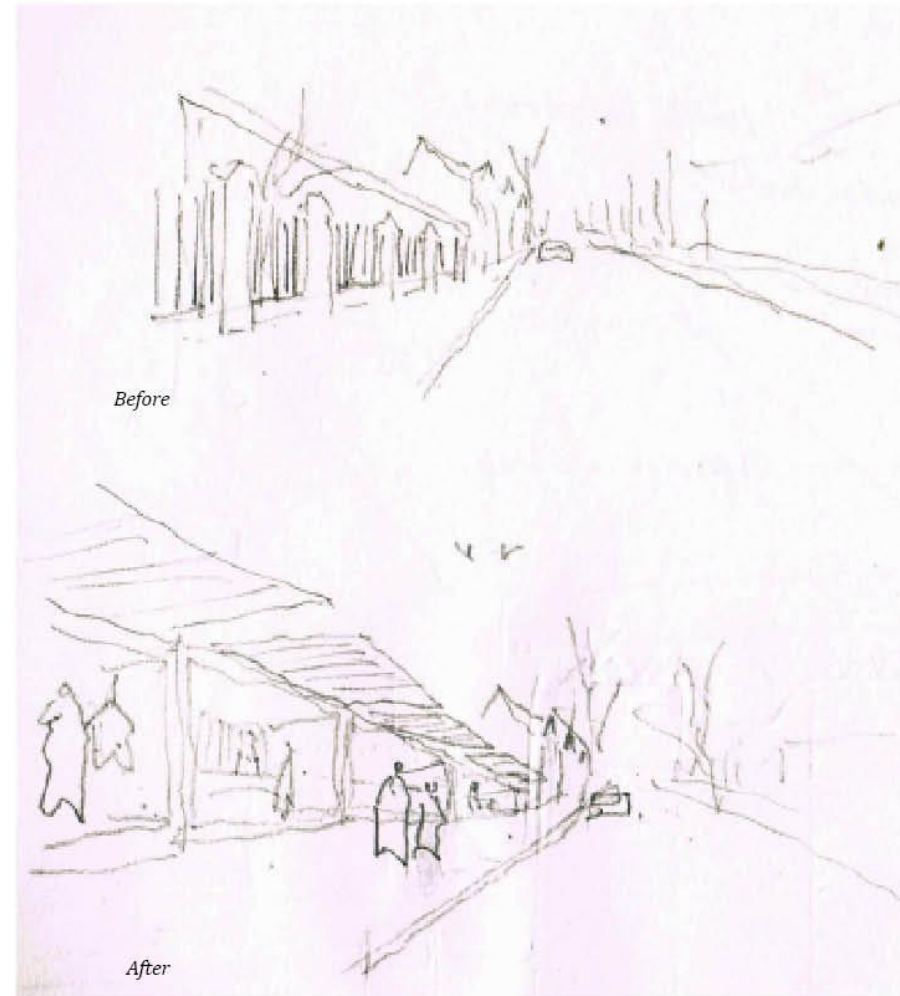
Left, maps comparing the Duncairn area from early in the 19th Century, and today. The second map illustrates a piece of research we pursued in collaboration with local residents. It identified an area of the map that is 'missing' in the perceived mental maps of residents of both Tigers Bay and New Lodge, either side of the present day interface.

These 'Neutral' zones within peoples' perception of the streetscape provide opportunities for redevelopment that can potentially be adopted by both communities, allowing Duncairn Gardens to restore its role as a 'seam', as was its historical urban condition (above), rather than its current situation as a barrier.

The before and after sketches to the right are a quick indicative idea of how these spaces might be tested and made to contribute to a more active Duncairn Gardens / North Queen Street streetscape, one that might relate back to its more typical historical condition of active frontages and awnings that welcome and encourage more passers-by (below). This would in turn create a more walkable streetscape helping to reconnect nearby communities to their city centre.



North Queen Street, 1936. Copyright Francis Frith Collection











The opportunity exists to re-configure existing open space to re-establishing the Falls as an active, vibrant, walkable streetscape and public realm

MMAS

*Second Floor
Conway Mill
5-7 Conway Street
Belfast
BT132DE*

*info@mmasarchitects.com
(+44) 028 90313923*

www.mmasarchitects.com

