

PHA –Community Development

Diane McIntyre

Health and Wellbeing Improvement Manager

Community Development Lead

Diane.mcintyre@hscni.net

PHA Current Community Development Priorities

- Delivering Together and HSC Transformation Programme
- Healthy Places-linking to Making Life Better
- PHA CD Procurement



**HEALTH AND
WELLBEING
2026**
DELIVERING TOGETHER

What this means?



Build capacity
in community
and
prevention



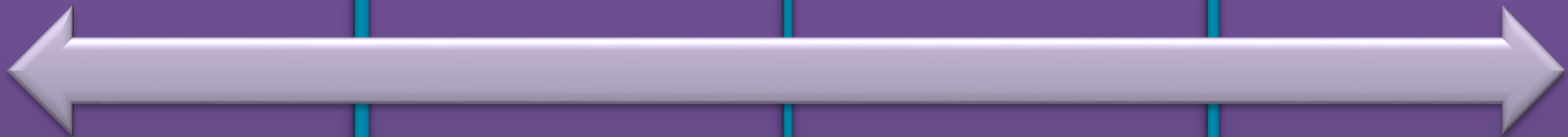
Enhancing
support in
primary care



Reforming
community &
hospital
services



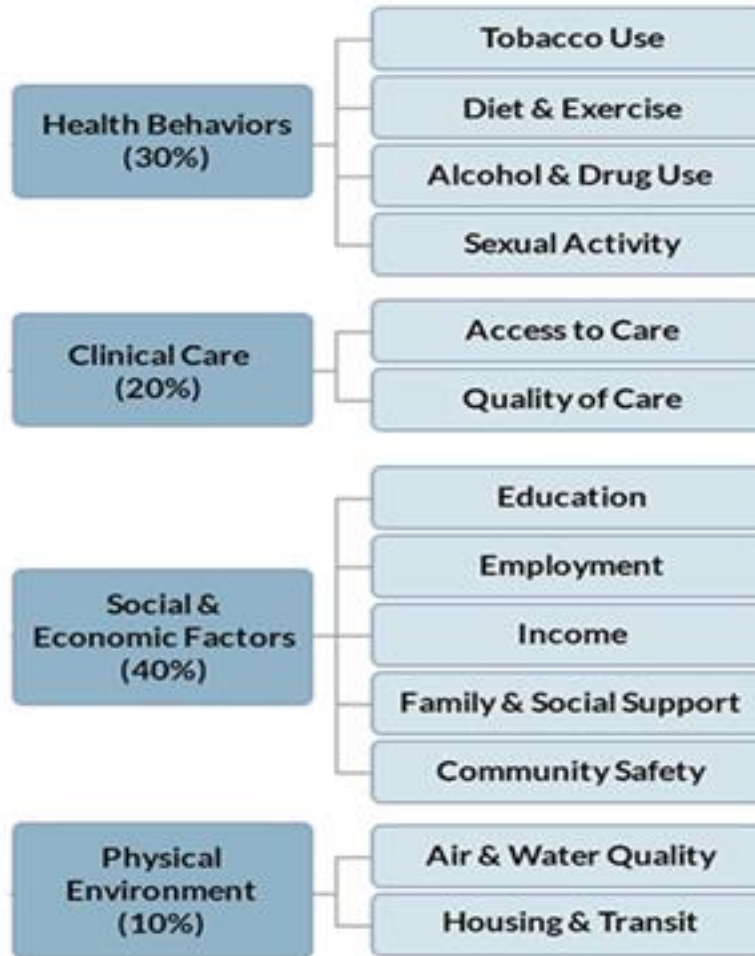
Organising
ourselves to
deliver



Implementation Structures

- Transformation Advisory Board
- Transformation Implementation Group
- A range of existing and ‘new’ workstreams
 - *For example* Community Development, Multi-Disciplinary Working Primary Care, Service Reconfiguration, Workforce Strategy, Leadership Strategy
- Small Transformation Team

Weighting of factors that influence health outcomes



Why Community Development?

- * People from poorer backgrounds in Northern Ireland have a shorter life expectancy and live more years with chronic illness and/or disability. Other communities, such as Travellers, are also known to experience health inequalities.
- * Create the conditions for a just, inclusive and sustainable society by supporting communities to engage in collective action for transformative change.
- * Reduce inequalities and improve health and wellbeing by working with communities to bring about change.

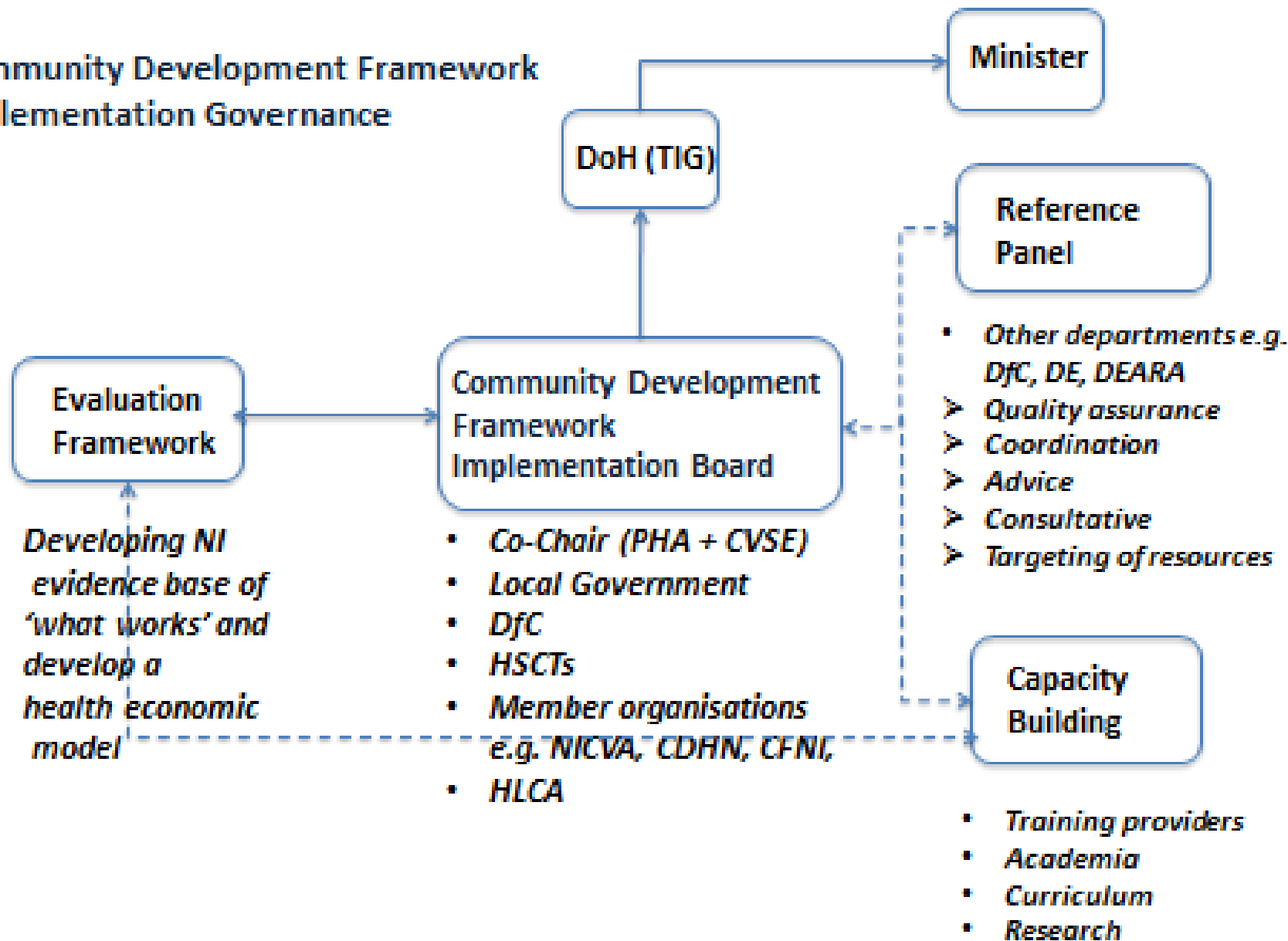
Why Community Development?

- * This approach must retain a specific focus on **redressing imbalances of power, wealth and resources**.
- * Community development values and principles need to be manifested in developing **real partnership and co-production** with local communities to identify, understand and take action on **root causes**.

Developing a Framework -contribution to HSC Transformation

- Community Development Approach 10 years
- Phase 1-produce Framework, share tools, resources, capacity building, QA, grow to scale
- Phase 2-embed good practice, initiate systemic change
- Phase 3-capture the learning, facilitate positive practices and models, CD Register, standards

Community Development Framework Implementation Governance





MAKING LIFE BETTER

**A WHOLE SYSTEM STRATEGIC FRAMEWORK FOR
PUBLIC HEALTH**

2013 - 2023

Making Life better-6 Themes

Giving Every Child the Best Start

Equipped Throughout Life

Empowering Healthy Living

Creating the Conditions

Empowering Communities

Developing Collaboration





Principles for Healthy Places

- A system approach to design
- Evidence based
- Meeting Need
- Empowerment
- Participation
- Asset based approaches
- Co-production and Co-design
- Local Leadership



Programme for Government

OUTCOMES

INDICATORS

We prosper through a **STRONG, COMPETITIVE** regionally balanced economy



- Private sector NICEI
- External sales
- Rate of innovation activity (% of companies engaging in innovation activity)
- Employment rate by council area
- % change in energy security of supply margin

We live and work sustainably - **protecting the environment**



- % all journeys which are made by walking/cycling/public transport
- Greenhouse gas emissions
- % household waste that is reused, recycled or composted
- Annual mean nitrogen dioxide concentration at monitored urban roadside locations
- % water bodies at 'good' status
- Biodiversity

We have a **MORE EQUAL SOCIETY**



- Gap between highest and lowest deprivation quintile in healthy life expectancy at birth
- Gap between % non-FSME school leavers and % FSME school leavers achieving at Level 2 or above including English & Maths
- % population living in absolute and relative poverty (before housing costs)
- Employment rate of 16-64 year olds by deprivation quintile
- Economic inactivity rate excluding students
- Employment rate by council area

We enjoy long, healthy, active lives



- Healthy life expectancy at birth
- Preventable mortality
- % population with GHQ12 scores ≥ 4 (signifying possible mental health problem)
- % babies born at low birth weight
- % people who are satisfied with health and social care
- Gap between highest and lowest deprivation quintile in healthy life expectancy at birth

We are an **INNOVATIVE, CREATIVE, SOCIETY**, where people can fulfil their potential



- Rate of innovation activity (% of companies engaging in innovation activity)
- Proportion of premises with access to broadband services at speeds at or above 30Mbps
- % engaging in arts/cultural activities in the past year
- Self-efficacy
- % school leavers achieving at least level 2 or above including English and Maths

We have more people working in better jobs



- Economic inactivity rate excluding students
- Proportion of the workforce in employment qualified to level 1 and above, level 2 and above, level 3 and above, and level 4 and above
- Seasonally adjusted employment rate (16-64)
- A Better Jobs Index
- % people working part time who would like to work more hours
- Employment rate by council area
- Proportion of local graduates from local institutions in professional or management occupations or in further study six months after graduation

We have a **SAFE COMMUNITY** where we respect the law, and each other



- Prevalence rate (% of the population who were victims of any NI Crime Survey crime)
- A Respect Index
- % the population who believe their cultural identity is respected by society
- Average time taken to complete criminal cases
- Reoffending rate

Programme for Government

OUTCOMES

INDICATORS

WE CARE FOR OTHERS AND WE HELP THOSE IN NEED



- % population with GHQ12 scores ≥ 4 (signifying possible mental health problem)
- Number of adults receiving personal care at home or self directed support for personal care as a % of the total number of adults needing care
- % care leavers who, aged 19, were in education, training or employment
- % population living in absolute and relative poverty (before housing costs)
- Average life satisfaction score of people with disabilities
- Number of households in housing stress

We are a **shared society that respects diversity**



- A Respect Index
- % who think all leisure centres, parks, libraries and shopping centres in their areas are "shared and open" to both Protestants and Catholics
- % of the population who believe their cultural identity is respected by society
- Average life satisfaction score of people with disabilities

WE ARE A CONFIDENT, WELCOMING, OUTWARD-LOOKING SOCIETY



- A Respect Index
- Self-efficacy
- Total spend by external visitors
- % of the population who believe their cultural identity is respected by society
- Nation Brands Index

We have **HIGH QUALITY public services**



- % of people who are satisfied with health and social care
- % of schools found to be good or better
- Usage of online channels to access public services

We have created a place where people want to live & work, to visit & invest



- Prevalence rate (% of the population who were victims of any NI Crime Survey crime)
- Total spend by external visitors
- % of the population who believe their cultural identity is respected by society
- Nation Brands Index
- A Better Jobs Index

We connect people and opportunities through our **infrastructure**



- Average journey time on key economic corridors
- Proportion of premises with access to broadband services at speeds at or above 30Mbps
- % of all journeys which are made by walking/cycling/public transport
- Overall Performance Assessment (NI Water)
- Gap between the number of houses we need, and the number of houses we have
- % babies born at low birth weight

We give our children and young people the BEST START IN LIFE



- % children at appropriate stage of development in their immediate pre-school year
- % schools found to be good or better
- Gap between % non-FSME school leavers and % FSME school leavers achieving at Level 2 or above including English and Maths
- % school leavers achieving at Level 2 or above including English and Maths
- % care leavers who, aged 19, were in education, training or employment

Resilient Communities

